

Installation & Setup Guide

# Caveo Anti-Theft™ PC Card

Laptop Computer Security System



## **Thank you for purchasing Caveo Anti-Theft!**

Our product license and use agreement is included later in this booklet. It will also be displayed when you begin installing our software. Please read the agreement carefully. By installing Caveo Anti-Theft, you indicate that you have read and understood the Agreement and accept its terms and conditions.

### ***Please read this booklet before proceeding, and follow these instructions for installation and setup.***

Caveo Anti-Theft is a security product and a combined hardware/software system. Its installation is simple, but it differs from that of other PC Card products.

Inside the back cover of this booklet is a form for recording the PC Card serial number and your security information. We suggest you record this information and store this form in a secure place.

Copyright© 2001, 2002 Caveo Technology

Caveo Anti-Theft, Motion Password and CaveoCrypt are trademarks of Caveo Technology.

This product uses components written by Paul Le Roux

(pleroux@softwareprofessionals.com) and cryptographic software written by Eric Young (eay@cryptsoft.com).

All rights reserved.

## About Caveo Anti-Theft

Caveo Anti-Theft is an advanced laptop computer security system that protects both your computer and your confidential information. It is based on micro-machined motion sensors coupled with software to detect and analyze motion, determine whether a threat exists, and implement responses. The Caveo Anti-Theft system works whether your computer is on or off.

In normal everyday use, the system is either armed or disarmed. When armed, the Caveo system sounds alert and warning signals if it is moved. If an armed system is carried beyond a perimeter that you specify, Caveo Anti-Theft assumes that a theft is taking place and:

- ▶ Shuts down the operating system  
(*if the computer is on*);
- ▶ Upon attempted startup, prevents access to the operating system;
- ▶ Sounds an alarm (*optional*); and
- ▶ Secures the keys to confidential information  
(*if you have chosen to enable encryption*).

You can learn more about Caveo Anti-Theft by inserting the Caveo Anti-Theft CD ROM and clicking on “Demo” (*a 4-minute animated demonstration*) or “Help.” These and other product materials are also available at the Caveo Technology website ([www.caveo.com](http://www.caveo.com)).

Caveo Anti-Theft is compatible with the following operating systems:

- ▶ Windows® 98 SE (Second Edition)
- ▶ Windows® Millennium
- ▶ Windows® 2000
- ▶ Windows® XP

## Installation and Setup

Installation of Caveo Anti-Theft takes 5-10 minutes. Setup takes another 15-30 minutes and can be done immediately or postponed to a later time.

## Caveo Anti-Theft Installation

*If you are using Windows 2000 or XP, you must be logged in as a user with administrative privileges to install.*

1. Close all programs.
2. Insert the Caveo Anti-Theft CD ROM into the CD drive. *(Do not insert the PC Card.)* After a few seconds, a startup screen will appear.



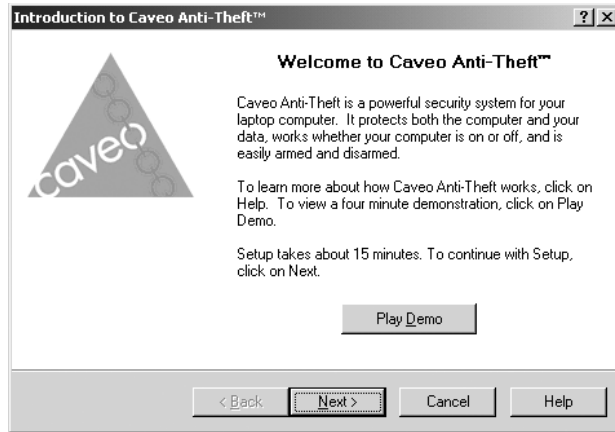
3. Review the Demo or Help options if you wish. When ready to install, click on Install.



4. Follow the instructions to install.
5. When installation is complete, click on Exit, and remove the CD.
6. Record the PC Card serial number on the form in the back inside cover of this booklet.
7. Insert the Caveo Anti-Theft PC Card into the PC Card slot. The Found New Hardware wizard will appear. Wait while the hardware is installed. When prompted, reboot your computer.
8. Upon reboot, proceed to Caveo Anti-Theft Setup.

## Caveo Anti-Theft Setup

When you restart your computer after installation, the Setup Wizard will appear.



Setup takes 15-30 minutes. You may complete the Setup process now or click on Cancel to complete it later.

Follow the instructions on the screens to complete Setup. Click on Help for additional information about the topic on any page.

During Setup, you may wish to record the following security information on the form in the back cover of this booklet:

- ▶ **User PIN** -the 4-digit password for everyday use
- ▶ **Emergency PIN** -the 16-digit password needed to gain access to a stolen computer
- ▶ **Recovery Questions and Answers** -needed in case you forget the Emergency PIN
- ▶ **Product Registration Number** -You'll be given this number when you register online, and will need it in the event of a malfunction or loss of your PC Card.

*If you click on Cancel, the Setup Wizard will reappear on subsequent startups. If you cancel Setup midway through and have already set the User PIN, you will be prompted to enter it upon the next restart, and then prompted to complete the Setup process. Caveo Anti-Theft will not be functional until you complete Setup.*

## **Uninstallation and Reinstallation**

For security reasons, Caveo Anti-Theft cannot be uninstalled if Setup has not been completed. Instructions for uninstalling can be found in Help. If you wish to reinstall after a previous uninstallation, please see [www.caveo.com](http://www.caveo.com).

## Product License and Use Agreement

Please review all the terms and conditions of the Caveo Anti-Theft product license and use agreement (“Agreement”) below. By installing the product, you indicate that you have read and understand this Agreement and accept its terms and conditions. If you do not agree with this Agreement, promptly return the Product to the place of purchase with a dated receipt for a full refund.

This constitutes the entire Agreement between you and Caveo Technology (“Caveo”).

1. **Definitions.** The Caveo Anti-Theft product (the “Product”) consists of (1) the Caveo Anti-Theft PC Card (“PC Card”), (2) the Caveo Anti-Theft software (“Software”), including all updates, upgrades, supplements and maintenance releases, and (3) all associated media, printed materials, and online or electronic documentation.
2. **Grant of License and Use.** Caveo grants you a non-exclusive, non-transferable, single-user license to use the Software on one or more computers. You may install the Software on computers you use, and you may move the PC Card from one computer to another.
3. **Intellectual Property Protection.** This Product is protected by U.S. and international intellectual property laws and treaties. It embodies patents, trade secrets, proprietary information and other intellectual property of Caveo and its licensors. You agree not to reverse engineer, disassemble or otherwise seek to discover such intellectual property. You further agree not to modify, change, or otherwise alter, destroy or damage the Product or any component thereof.
4. **Copyright and Trademark Restrictions.** The Software and associated written materials are copyrighted, and the product names and logos incorporated in the Product are trademarks of their owners. You agree to be bound by all the applicable copyright and trademark laws. Excepting the Software that will be automatically extracted and/or installed upon your acceptance of

the terms and conditions of this Agreement, and excepting one backup copy of the Software and one copy of any online or electronic materials, you may not copy or distribute any software, written materials, or logos.

5. **Transfer Restrictions.** You may transfer the Product directly to another end user provided that such transfer is in compliance with all other provisions herein, including Paragraph 8 below, provided that the transfer includes the Product in its entirety, and provided that the end user to whom you are transferring the Product agrees to be bound by the terms of this Agreement. In no event may you transfer, assign, rent, lease, sell or otherwise dispose of the Product or any component thereof except as expressly provided herein.
6. **Warranty and Liability.** Caveo warrants that the Product will perform substantially in accordance with authorized descriptive materials. Caveo will make commercially reasonable efforts to resolve any problems with Product performance. If it is unable to do so, Caveo’s entire liability and your exclusive remedy shall be return of the Product to the location of purchase with a dated receipt for a refund or replacement in accordance with the return policy of the retail or online store or authorized channel where you purchased the Product. If you purchased the Product at Caveo’s website, you may return the Product to Caveo within forty-five (45) days of purchase with a dated receipt to obtain a replacement. Returns to Caveo should be addressed to Caveo Returns, 411 Massachusetts Avenue, Cambridge, MA 02139 and must be properly packaged to avoid damage during shipping.

EXCEPT AS PROVIDED ABOVE, THIS PRODUCT AND ANY RELATED SERVICES OR CONTENT ARE PROVIDED “AS-IS.” TO THE MAXIMUM EXTENT PERMITTED BY LAW, CAVEO DISCLAIMS ALL OTHER REPRESENTATIONS AND WARRANTIES, EXPRESS OR IMPLIED, REGARDING THE PRODUCT, INCLUDING ITS FITNESS FOR A PARTICULAR PURPOSE, ITS QUALITY, SECURITY, MERCHANTABILITY, TITLE AND NON-INFRINGEMENT. CAVEO DOES NOT WARRANT THAT THE PRODUCT IS FREE FROM BUGS, VIRUSES, ERRORS OR OTHER LIMITATIONS, NOR DOES IT WARRANT ACCESS TO

THE INTERNET OR TO ANY OTHER SERVICE OR CONTENT.

THE ENTIRE LIABILITY OF CAVEO AND ITS REPRESENTATIVES (INCLUDING BUT NOT LIMITED TO SUBSIDIARIES, AFFILIATES, LICENSORS, THIRD-PARTY CONTENT OR SERVICE PROVIDERS, DISTRIBUTORS, DEALERS, RESELLERS, SALES REPRESENTATIVES, AND SUPPLIERS) FOR ANY REASON SHALL BE LIMITED TO THE AMOUNT PAID BY THE CUSTOMER FOR THE PRODUCT. TO THE MAXIMUM EXTENT PERMITTED BY APPLICABLE LAW, CAVEO AND ITS REPRESENTATIVES ARE NOT LIABLE FOR ANY INDIRECT, SPECIAL, INCIDENTAL, OR CONSEQUENTIAL DAMAGES, INCLUDING BUT NOT LIMITED TO DAMAGES ASSOCIATED WITH LOSS OF INFORMATION, FAILURE OF HARDWARE, SOFTWARE OR OPERATING SYSTEMS, BUSINESS INTERRUPTION LOSSES, OR ANY OTHER PECUNIARY LOSS, EVEN IF CAVEO OR ITS REPRESENTATIVES HAVE BEEN ADVISED OF THE POSSIBILITY OF SUCH DAMAGES.

SOME STATES DO NOT ALLOW CERTAIN OF THESE EXCLUSIONS AND LIMITATIONS, SO THE ABOVE MAY NOT FULLY APPLY TO YOU.

7. **Title.** Except for rights granted in this Agreement, Caveo and its licensors reserve all rights, title, and interests in the Product, and no right, title, ownership, interest or license in or to the Product, whether by implication, estoppel or otherwise, is granted, assigned or transferred to you in connection with this Agreement. Software Professionals has made the E4M software publicly available and has confirmed Caveo's non-exclusive license to use the E4M software in the Product and to distribute the Product. Software Professionals reserves all rights, title and interests in and to the E4M software.
8. **Export Compliance and Foreign Reshipment Liability.** This Agreement is expressly made subject to any export laws, regulations, orders or other restrictions imposed by the United States of America or any other country or governmental entity. Notwithstanding any other provision of this Agree-

ment to the contrary, you shall not directly or indirectly import, export or reexport this Product or any component thereof to any country, foreign person, or entity subject to U.S. export restrictions. You unconditionally accept full responsibility for compliance with these requirements, and you agree and certify that the Product will not be used for any purpose prohibited by law. You agree and certify that you are not a citizen or permanent resident of any country to which the export of this Product is prohibited by United States law.

9. **U.S. Government Restricted Rights.** Product provided to the U.S. Government is provided with the commercial rights and restrictions described herein.
10. **Termination.** Caveo may terminate this Agreement immediately and without notice if you fail to comply with any term or condition herein. Upon such termination you must uninstall the PC Card and Software, return the PC Card to us, and destroy all copies of the Software, including any backup copies.
11. **Changes.** From time to time, Caveo may change the terms and conditions of this Agreement. For the latest version of this agreement, go to [www.caveo.com](http://www.caveo.com). Your continued use of the Software indicates your agreement to any changes that have been made during your period of use.
12. **Severability.** The failure of Caveo to enforce any of the terms of this Agreement shall not be construed as a waiver of future enforcement of that or any other term. If any provisions, or portions thereof, are found to be illegal, invalid, or unenforceable, then, such provision shall in no way affect the validity or enforceability of the remaining provisions.
13. **Governing law.** This Agreement will be governed by the laws of the Commonwealth of Massachusetts.

You may wish to record the following product and security information. Please keep this form in a secure location.

### **PC Card Serial Number**

---

This number is imprinted on the back of the PC Card.

### **User PIN**

---

This is the 4-digit alphanumeric password that can be used to disarm Caveo Anti-Theft and that is needed to change settings and to uninstall.

### **Emergency PIN**

---

This is the 16-digit alphanumeric password that is needed to gain access to the computer if it has been stolen or accidentally alarmed.

### **Recovery Questions and Answers**

If you forget the Emergency PIN, after two incorrect entries, you'll be prompted with these questions. You'll also need to answer these questions to uninstall. Note: the answers must be identical to your initial entries in all characters, spacing, punctuation and capitalization!

1. Question \_\_\_\_\_  
Answer \_\_\_\_\_
2. Question \_\_\_\_\_  
Answer \_\_\_\_\_
3. Question \_\_\_\_\_  
Answer \_\_\_\_\_

### **Product Registration Number**

---

When you register online, we'll give you this number. You'll need it to obtain a replacement in the event of a lost or malfunctioning card.



Technical Support  
[www.caveo.com/products/techsupport.htm](http://www.caveo.com/products/techsupport.htm)  
Email: [help@caveo.com](mailto:help@caveo.com).  
Phone: 1-617-576-7704.

Caveo Technology  
411 Massachusetts Avenue  
Cambridge, MA 02139-4102  
USA

[www.caveo.com](http://www.caveo.com)